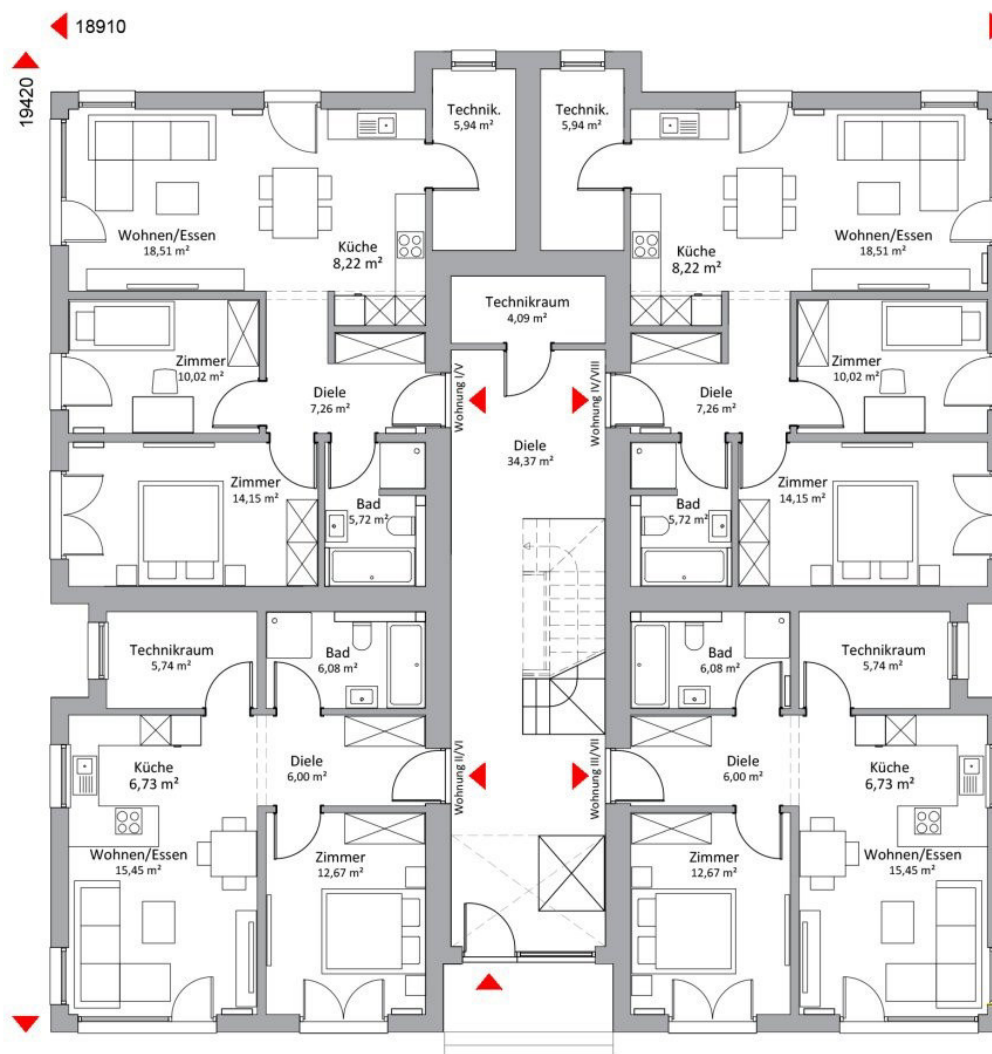


POLY 753 W10

753,26 m²



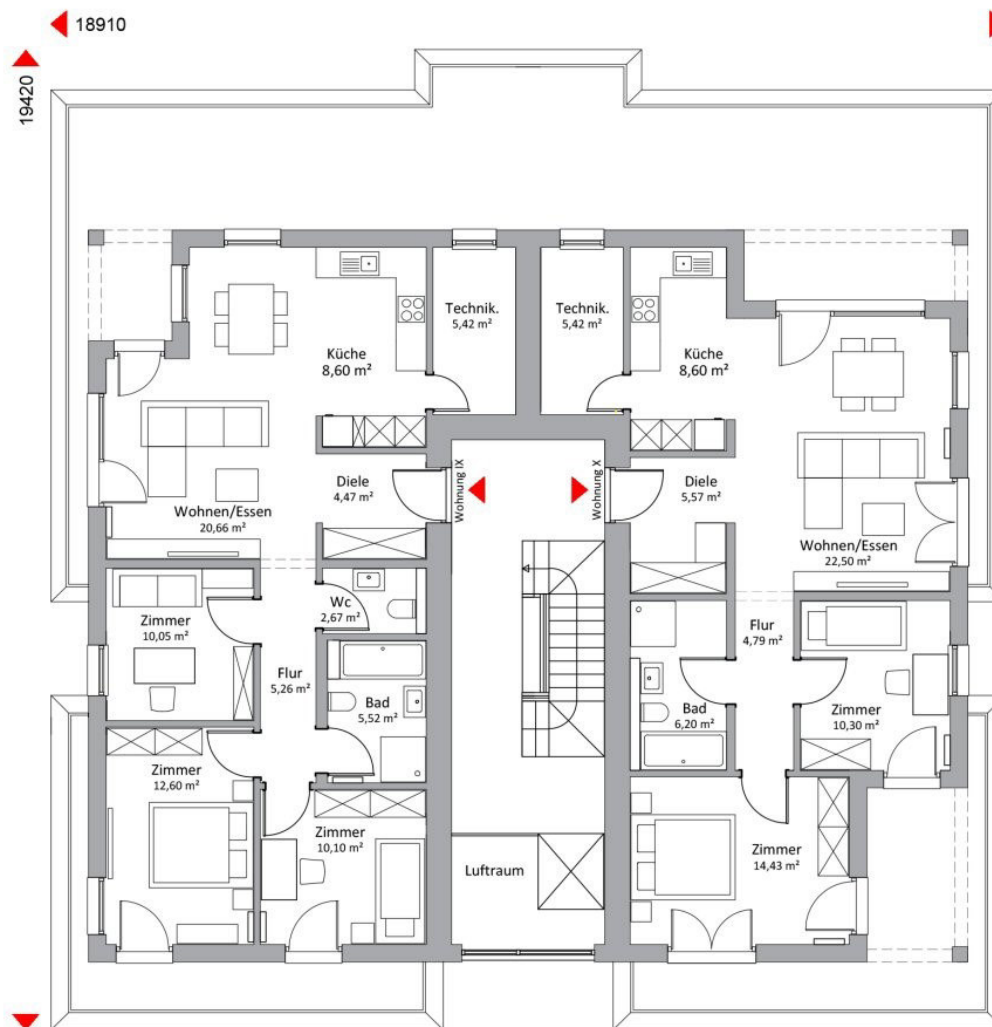
Erdgeschoss/Obergeschoss I 283,44 m²

Wohnung I/IV/V/VIII 52,67 m²

Wohnung II/III/VI/VII 69,82 m²

POLY 753 W10

753,26 m²



Obergeschoss II 186,38 m²

Wohnung IX 77,37 m²

Wohnung X 85,35 m²